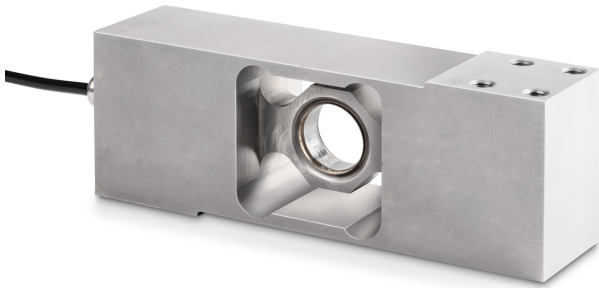


KERN CP 100-3P9

KERN

Single-point load cell made from stainless steel



Category

Brand	Sauter
Product category	Measuring cell
Product group	Load cell
Product family	CP P9

Measuring System

Weighing capacity [Max]	100 kg
Load cell connection	4-wire
Load cell OIML class	C3
Load cell - Resolution (verifiable)	3000 e
Maximum platform size	800×800 mm
Load cell - characteristic value - nominal	2 mV/V
Load cell - characteristic value - variance	0,2 mV/V
Load cell - Y-value	10000
Load cell - Combined error	0,023%
Load cell - Dead load [Min] (%)	0%
Measuring applications	mass
Load cell - Input resistance - nominal	350 Ω
Load cell - Output resistance - nominal	350 Ω
Load cell - Isolation resistance - [Min]	5000 MΩ
Load cell - Recommended excitation voltage [Min]	5 V
Load cell - Recommended excitation voltage [Max]	12 V
Load cell - Input resistance - variance	3,5 Ω
Load cell - Output resistance - variance	10 Ω
Directions of force	compression

Approval

CE mark	✓
---------	---

Construction

Design	Singlepoint load cell
Dimension (W×D×H)	174×45×64 mm
Material	stainless steel
Cable length	3 m
Mounting - force application	4 × threaded hole M8
Mounting - force dissipation	4 × threaded hole M8

Functions

IP protection - complete device	IP68 IP69K
---------------------------------	---------------

Environmental conditions

Use temperature [Min]	-10 °C
Use temperature [Max]	40 °C
Ambient temperature [Min]	-35 °C
Ambient temperature [Max]	65 °C
Storage temperature [Min]	-40 °C
Storage temperature [Max]	70 °C

Packing & Shipping

Readability force [d] (N)	1 d
Dimensions packaging (W×D×H)	280×175×125 mm
Net weight	2,736 kg
Shipping method	Parcel service
Net weight approx.	2,8 kg
Gross weight approx.	3,4 kg
Shipping weight	3,252 kg

Services (optional)

Article number for DAkkS calibration (compressive force)	963-262V
--	----------

Pictograms

STANDARD



OPTION

